

陳瓊安

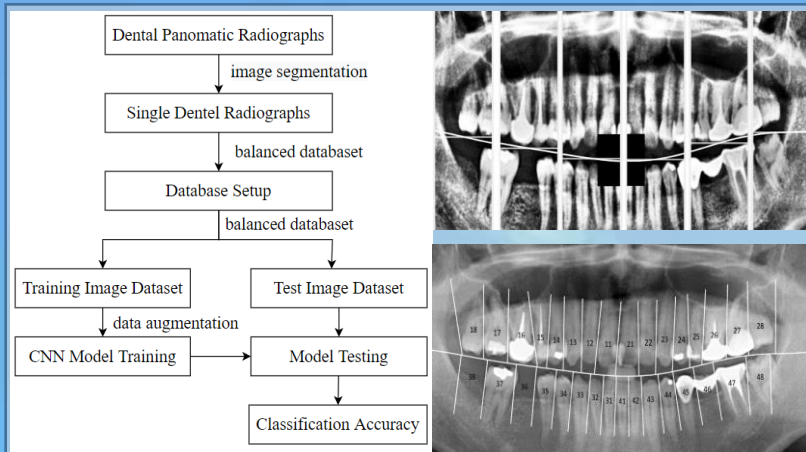
Position : Associate Professor

Phone : +886-2-2908-9899 Ext.4813

E-Mail : joannechen@mail.mcut.edu.tw

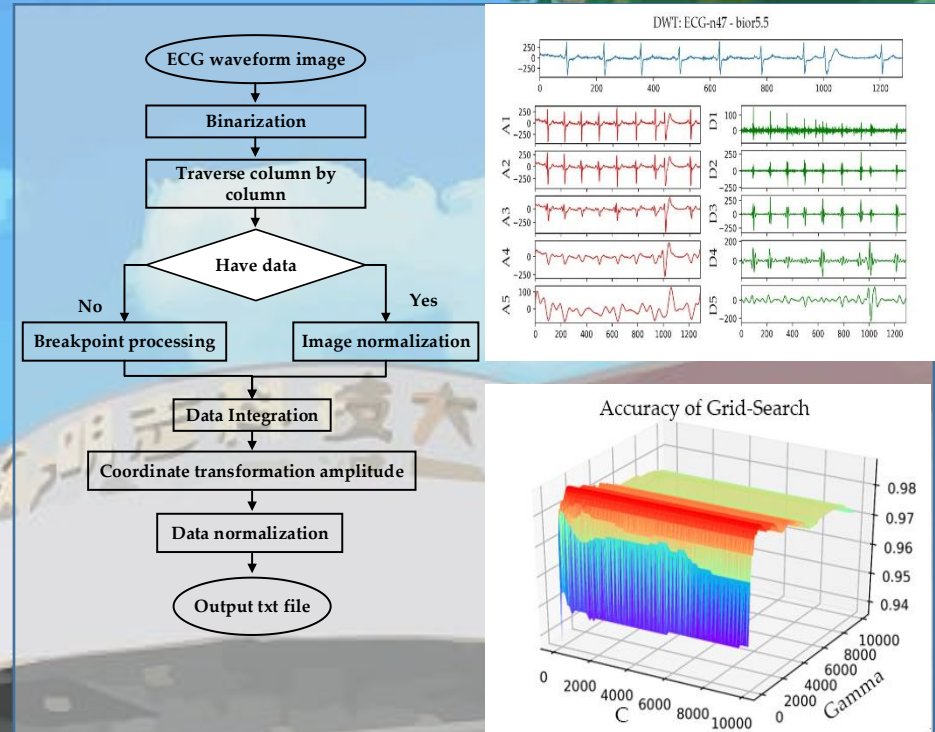
Education : Ph.D., National Cheng Kung University.

**Research : Digital Integrated Circuit Design,
System on a Chip, Biomedical Circuit System,
Data Compression.**



	This work			Lin et al. [33]	Çelik et al [34]	Park et al. [15].
	Google Net	Squeeze Net	Alex Net			
Missing teeth	97.20%	92.90%	92.90%	96.18%	NA	59.09%
Restoration	99.00%	99.90%	97.10%	84.30%	97.10% highest	NA
Accuracy	97.10%	96.20%	95.20%	90.24%	92.24%	59.09%

Biomedical Circuit and System

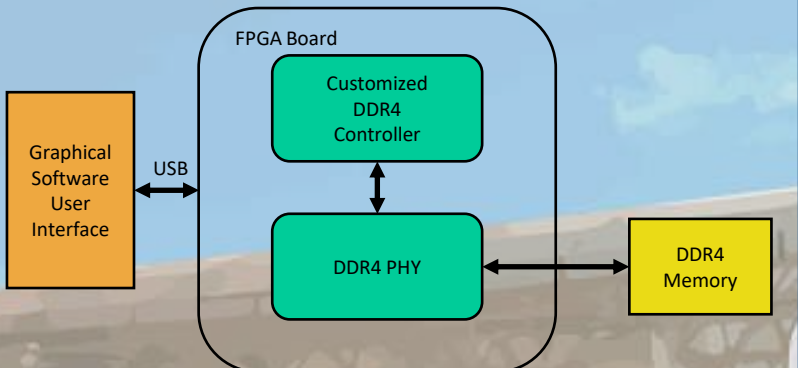


ECG Diagnosis and Prediction

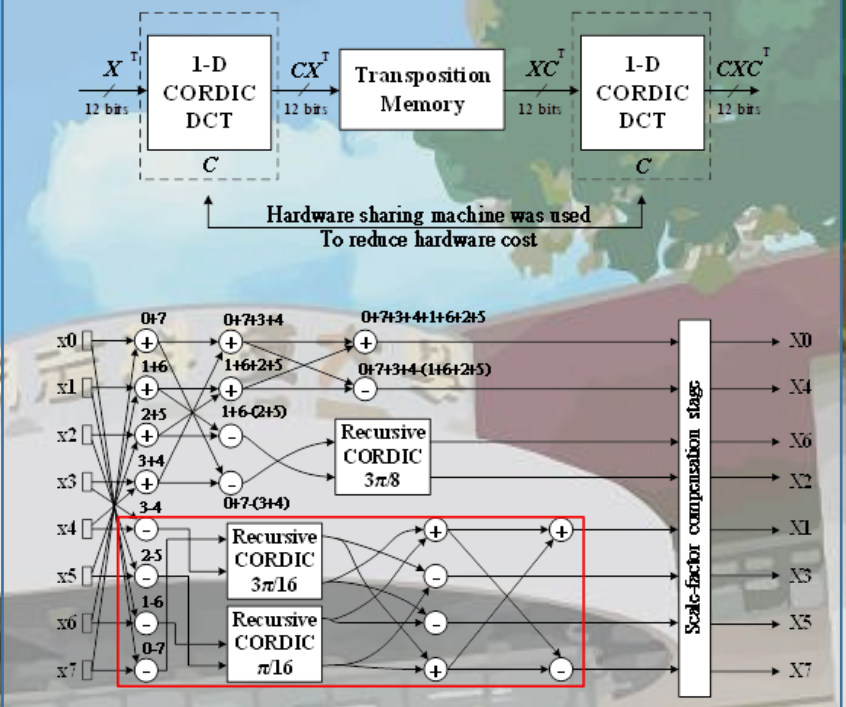
Journal Papers:

1. Yueh Chuo, Wen-Ming Lin, Tsung-Yi Chen, Mei-Ling Chan*, Yu-Sung Chang, Yan-Ru Lin, Yuan-Jin Lin, Yu-Han Shao, **Chiung-An Chen***, Shih-Lun Chen* and Patricia Angela R. Abu, "A high-accuracy detection system: based on transfer learning for apical lesions on periapical radiograph," *bioengineering*, vol. 9, no. 12, pp. 1-16, Dec. 2022. (SCI, Impact Factor =5.046) (31/98 Q2) (ISSN: 2306-5354)
2. Shih-Lun Chen, Tsung-Yi Chen, Yen-Cheng Huang, **Chiung-An Chen***, He-Sheng Chou, Ya-Yun Huang, Wei-Chi Lin, Tzu-Chien Li, Jia-Jun Yuan, Patricia Angela R. Abu and Wei-Yuan Chiang, "Missing teeth and restoration detection using dental panoramic radiography based on transfer learning with CNNs," *IEEE Access*, vol. 10, pp. 118654 - 118664, Nov. 2022. (SCI, Impact Factor =3.476) (104/344 Q2) (ISSN: 2169-3536)
3. Shih-Lun Chen, Tsung-Yi Chen, Yi-Cheng Mao, Szu-Yin Lin*, Ya-Yun Huang, **Chiung-An Chen**, Yuan-Jin Lin, Yo-Ming Hsu, Chi-An Li, Wei-Yuan Chiang, Kai-Yi Wong and Patricia Angela R. Abu, "Automated detection system based on convolution neural networks for retained root, endodontic treated teeth, and implant recognition on dental panoramic images," *IEEE Sensors Journal*, vol. 22, no. 23, pp. 23293-23306, Dec. 2022. (SCI, Impact Factor =4.325) (14/76 Q1) (ISSN: 1530-437X)
4. Shih-Lun Chen, Tsung-Yi Chen, Ting-Lan Lin*, **Chiung-An Chen***, Szu-Yin Lin, Yu-Liang Chiang, Kun-Hsien Tung and Wei-Yuan Chiang*, "Fast control for backlight power-saving algorithm using motion vectors from the decoded video stream," *sensors*, vol. 22, no. 19, pp. 1-15, Sep. 2022. (SCI, Impact Factor=3.847)(16/76 Q1) (ISSN: 1424-8220)
5. Chih-Kai Liu, Wei-Yuan Chiang*, Pei-Zong Rao, Pei-Hsiu Hung, Shih-Hung Chen, **Chiung-An Chen***, Liang-Hung Wang, Patricia A.R. Abu, and Shih-Lun Chen*, "The Uses of a Dual-Band Corrugated Circularly Polarized Horn Antenna for 5G Systems" *Micromachines*, vol. 13, no. 2, pp.1-18, Feb. 2022. (SCI, Impact Factor=2.891) (23/64)(EISSN: 2072-666X)
6. Yen-Cheng Huang, **Chiung-An Chen***, Tsung-Yi Chen, He-Sheng Chou, Wei-Chi Lin, Tzu-Chien Li, Jia-Jun Yuan, Szu-Yin Lin*, Chun-Wei Li, Shih-Lun Chen*, Yi-Cheng Mao, Patricia Angela R. Abu, Wei-Yuan Chiang and Wen-Shen Lo, "Tooth position determination by automatic cutting and marking of dental panoramic X-ray film in medical image processing", *Applied Sciences*, vol. 11, no. 24, pp. 1-22, Dec. 2021. (SCI, Impact Factor=2.679) (38/90)(ISSN: 2076-3417)
7. Chun-Wei Li, Szu-Yin Lin*, He-Sheng Chou, Tsung-Yi Chen, Yu-An Chen, Sheng-Yu Liu, Yu-Lin Liu, **Chiung-An Chen***, Yen-Cheng Huang, Shih-Lun Chen, Yi-Cheng Mao, Patricia Angela R. Abu, Wei-Yuan Chiang and Wen-Shen Lo, "Detection of dental apical lesions using CNNs on periapical radiograph," *Sensors*, vol. 21, no. 21, pp. 1-17, Oct. 2021. (SCI, Impact Factor=3.576)(82/273) (ISSN: 1424-8220)
8. Liang-Hung Wang, Ze-Hong Yan, Yi-Ting Yang, Jun-Ying Chen, Tao Yang, I-Chun Kuo*, Patricia Angela R. Abu, Pao-Cheng Huang*, **Chiung-An Chen*** and Shih-Lun Chen, "A classification and prediction hybrid model construction with the IQPSO-SVM Algorithm for atrial fibrillation arrhythmia," *Sensors*, vol. 21, no. 15, pp. 1-20, Aug. 2021.(SCI, Impact Factor=3.576)(82/273) (ISSN: 1424-8220)

Technical Support : Design DDR4 Controller for Portable Testing.
 System Architecture : Realized DDR Controller with Physical Layer in FPGA.
 Contribution : MCUTEe, Training 3 Master Students.
 NANYA, Reducing Engineers Loading.



Embedded System with Digital Controller



VLSI Design for DSP