



林君玲

Position : Associate Professor

Phone : +886-2-2908-9899 Ext. 4819

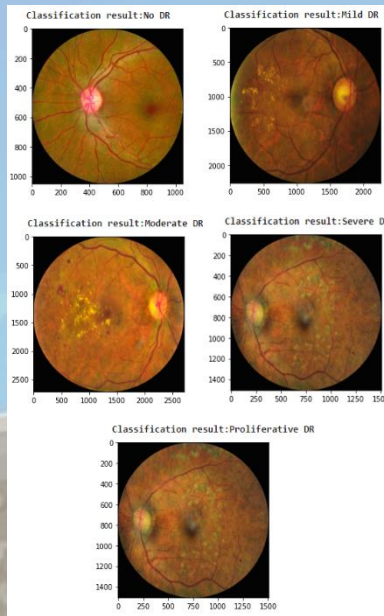
E-Mail : ginnylin@mail.mcut.edu.tw

Education : Ph.D., National Chiao Tung University.

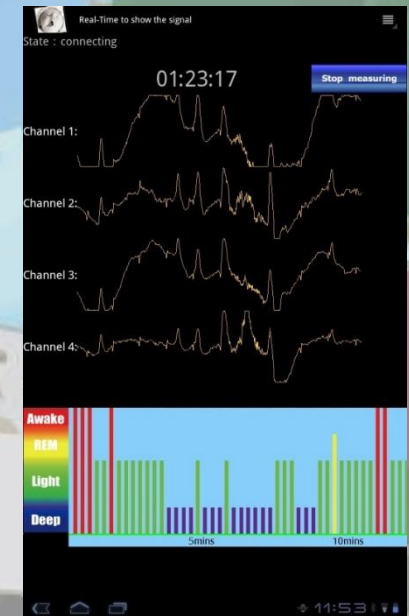
Research : Expert systems, Neural fuzzy systems, EEG/ECG signal processing and Neuro-engineering.



Intelligent cardiovascular measurement service system



Fundus AI-assisted prediction system



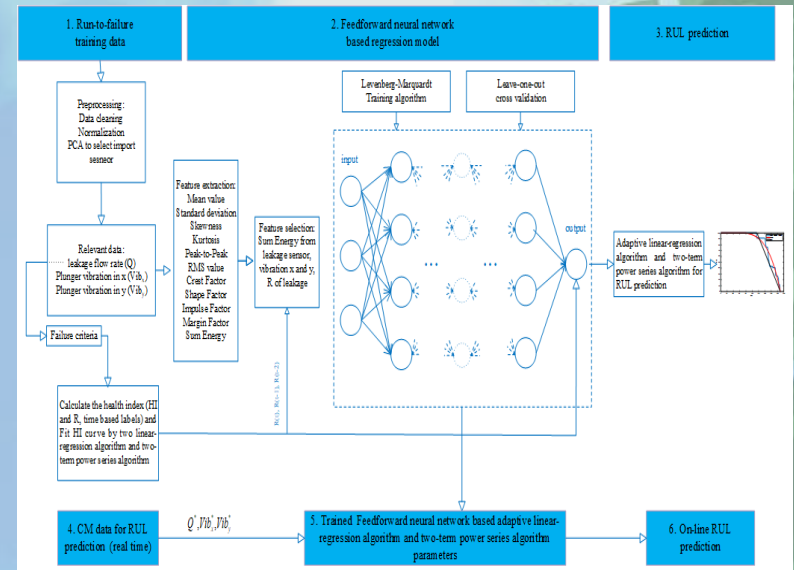
Sleep Quality Detection Based on EEG Signals

| 健檢項目 |
|-------------------------------|
| 年齡: 40 |
| 身高(cm): 175 |
| 體重(kg): 78 |
| BMI(kg/m ²): 25.4 |
| 腰圍(cm): 70 |
| 收縮壓(mmHg): 120 |
| 舒張壓(mmHg): 90 |
| 總膽固醇(mg/dL): 30 |
| 高密度膽固醇(mg/dL): 30 |
| 低密度膽固醇(mg/dL): 20 |
| 三酸甘油脂(mg/dL): 40 |
| 飯前血糖(mg/dL): 50 |
| 糖化血紅素(HbA1c)(%): 10 |
| 尿酸(mg/dL): 20 |
| 白蛋白(g/dL): 10 |
| 血中尿素氮(BUN)(mg/dL): 10 |

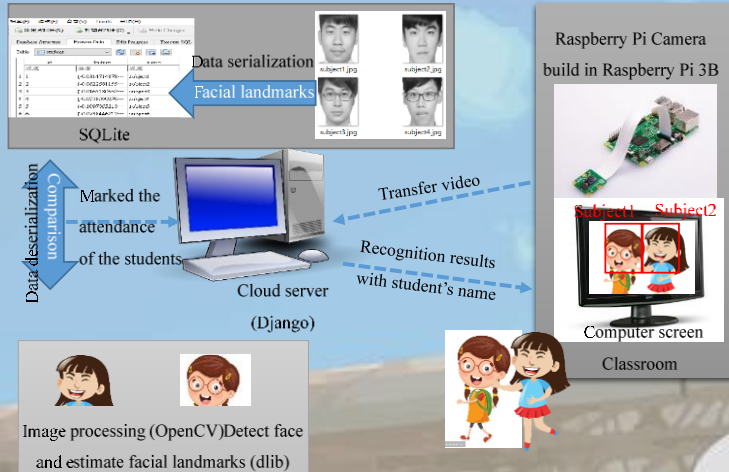
疾病預測

| 疾病 | 10年風險值(%) | 1年中高風險 | 缺少檢驗項目 |
|-----|-----------|--------|--------|
| 糖尿病 | 8.54 | 否 | 無 |
| 高血壓 | 99.08 | 是 | 無 |
| 冠心病 | 27.91 | 是 | 無 |
| 腦中風 | 9.16 | 是 | 無 |
| 腎臟病 | — | 是 | — |

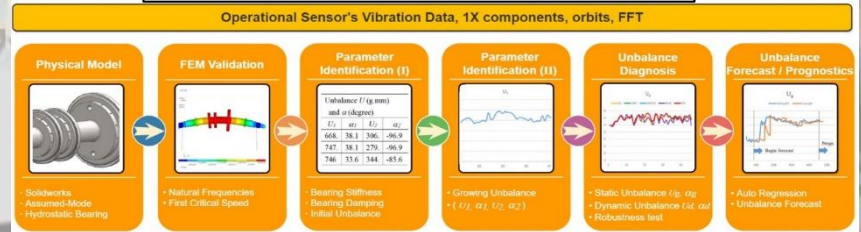
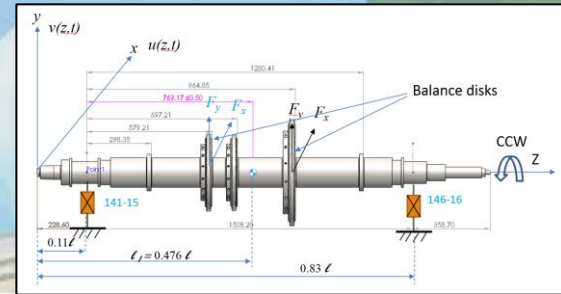
Intelligent Healthcare system



Machine Health Monitoring System (MHMS)



Application of Adaptive Tolerance and Serialized Facial Feature Extraction to Automatic Attendance System



Unbalance Monitoring and Prognostics